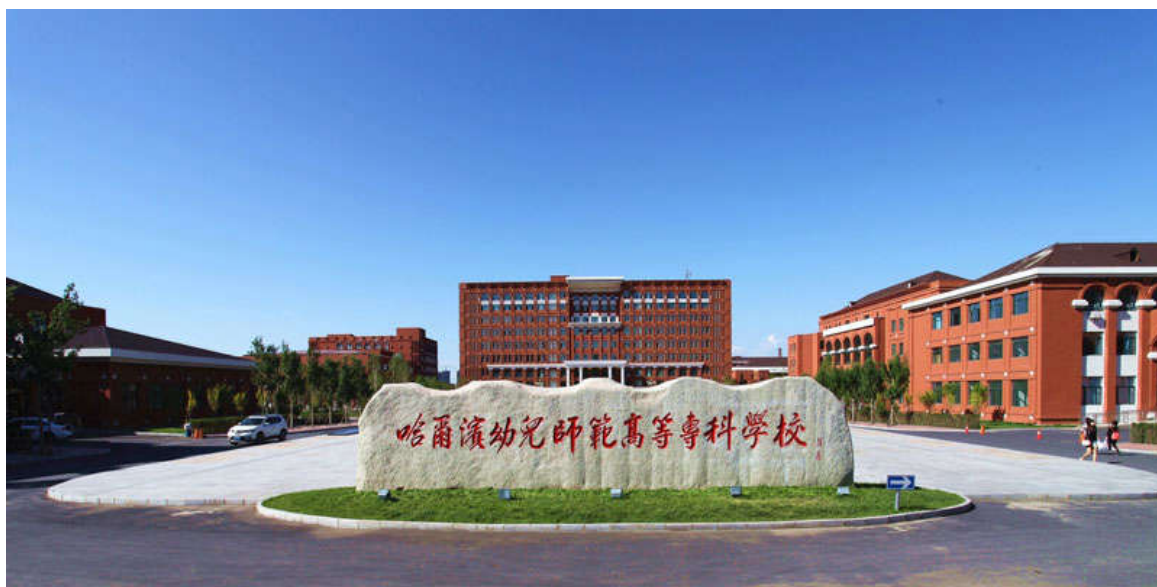




哈尔滨幼儿师范高等专科学校 2016 年毕业生就业质量报告



二〇一六年十二月



	-----	1
	-----	3
	-----	3
	-----	3
	-----	4
	-----	4
	-----	5
	-----	5
1.	-----	5
2	-----	5
3.	-----	6
	-----	6
1.	-----	6
2	-----	7
3.	-----	7
	-----	8
	-----	8
	-----	9
	-----	10
	-----	11
	-----	12
	-----	12
	-----	13
	-----	13
	-----	13
	-----	14
	-----	16
	-----	17
	-----	18
	-----	18



64

2012

5000

90

27

10

12

60

"

"

"

"

"

"



"

"

"

"

2013

2014

35

2015

40

"

"

2016

2016

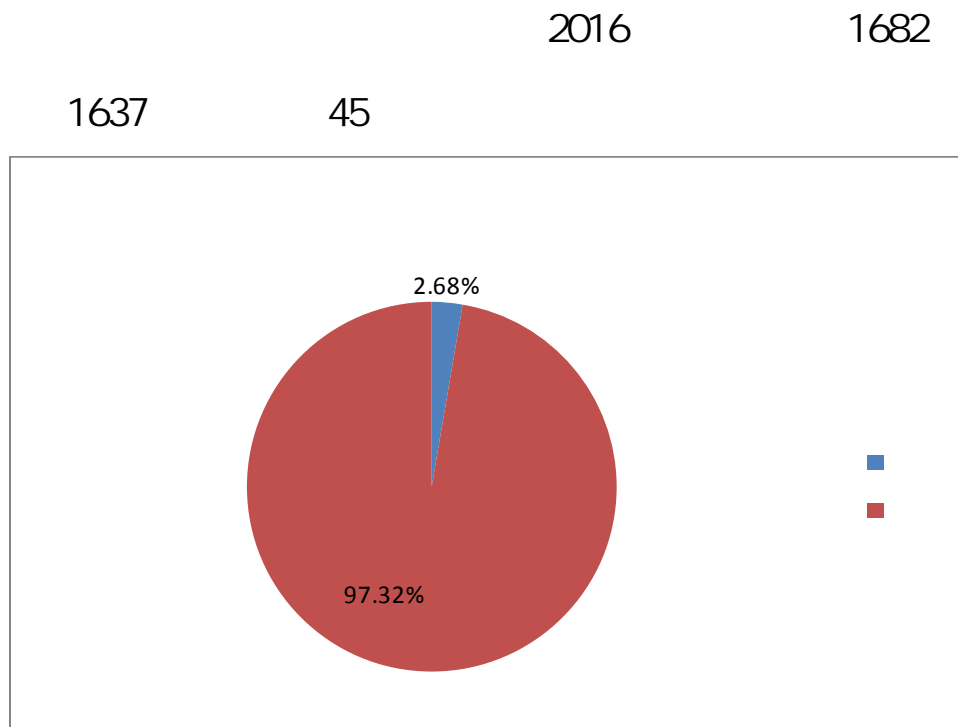
2016

2016

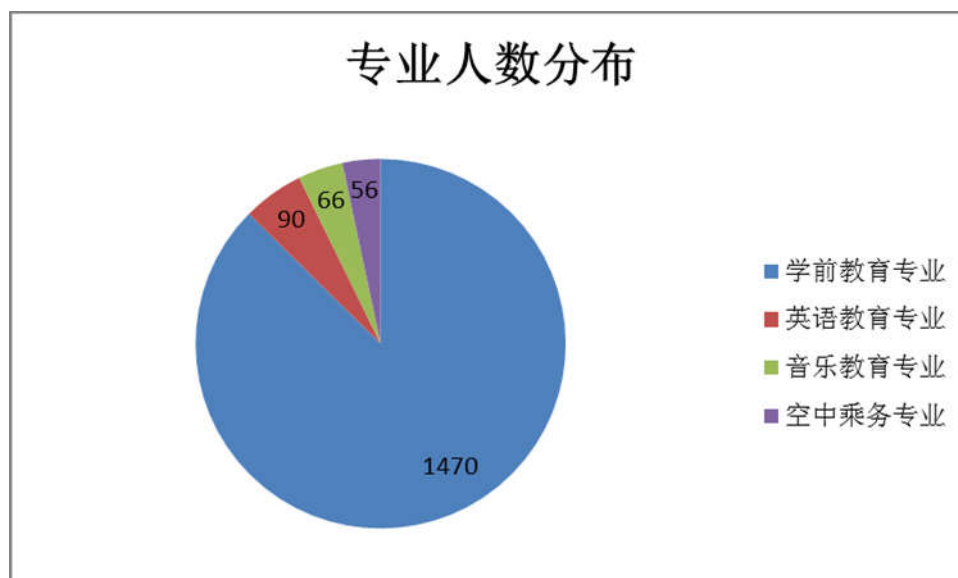
2016

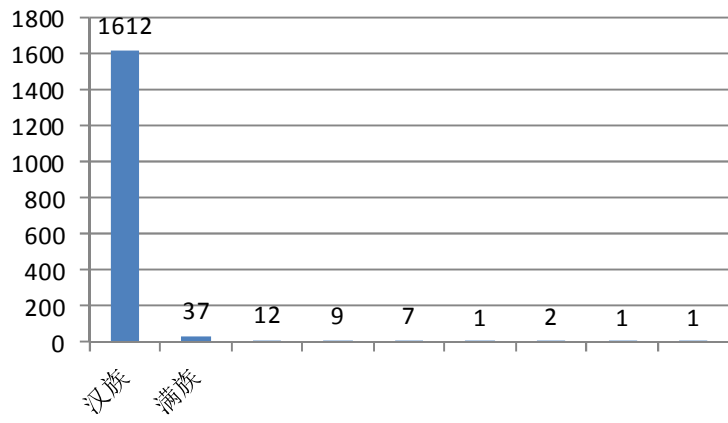


一、毕业生的规模与结构：



2015







二、毕业生就业状况：

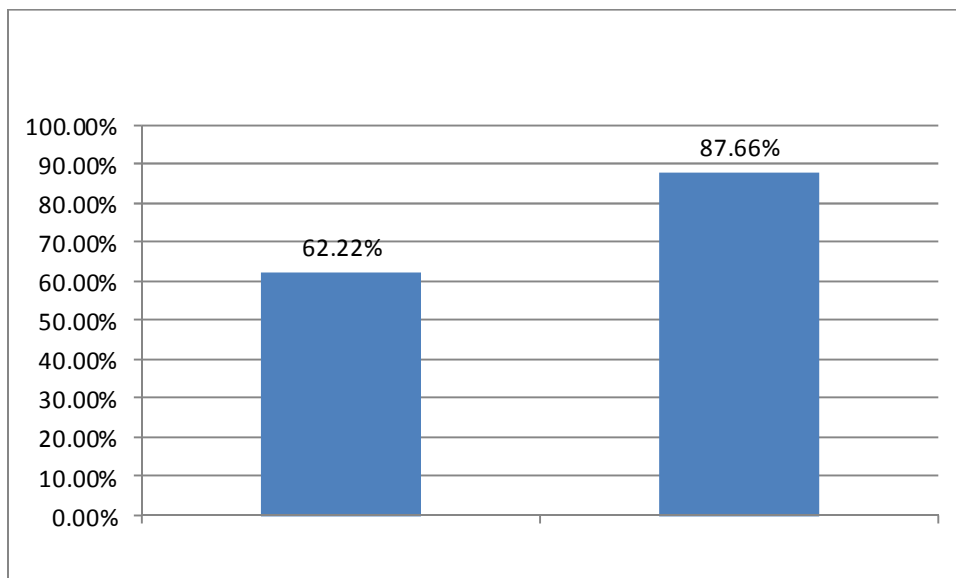
；

1.

2016	1682	8
120	7.13%	110
6.54%	1233	73.31%
219	13.02%	86.98%

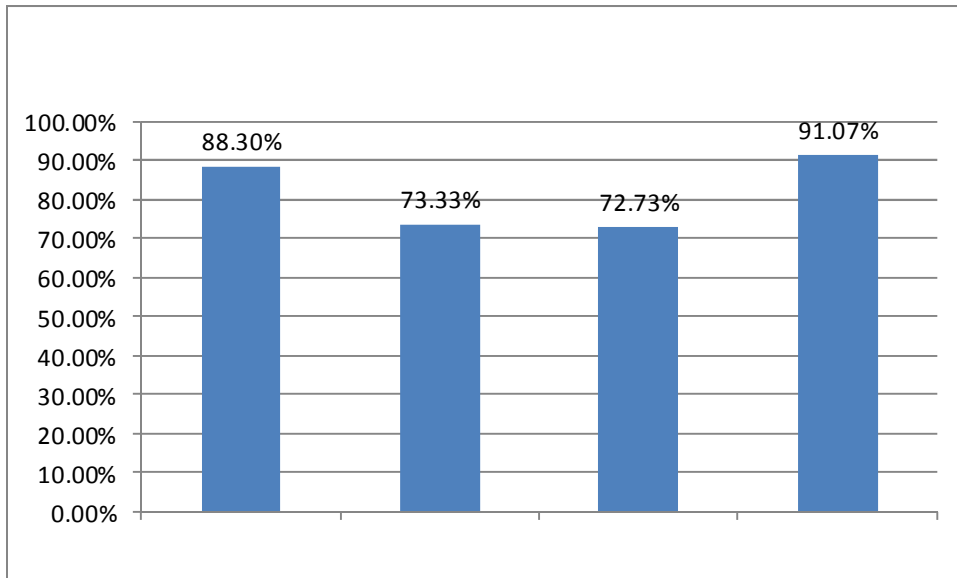
2.

45	28	1637
1435		





3.



2016

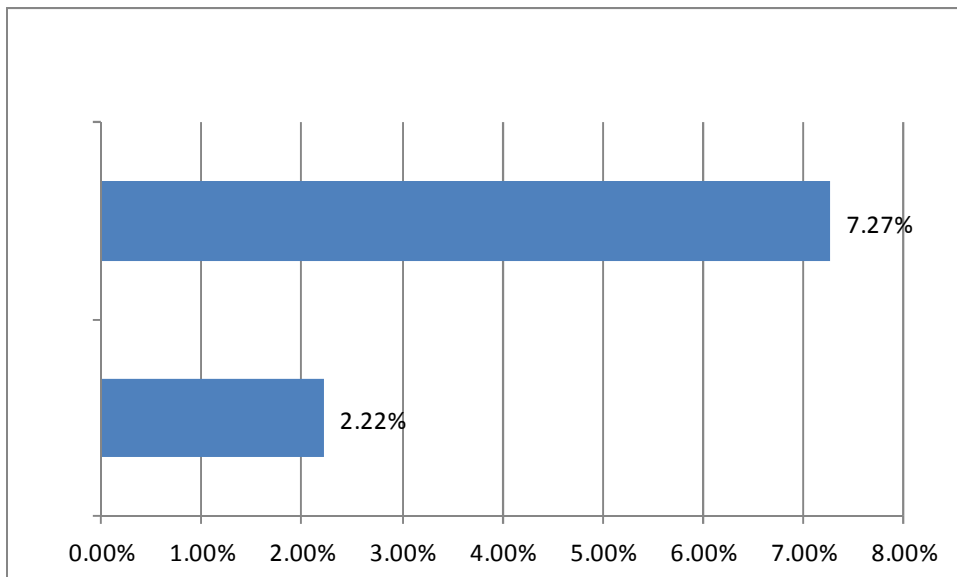
120

1

119

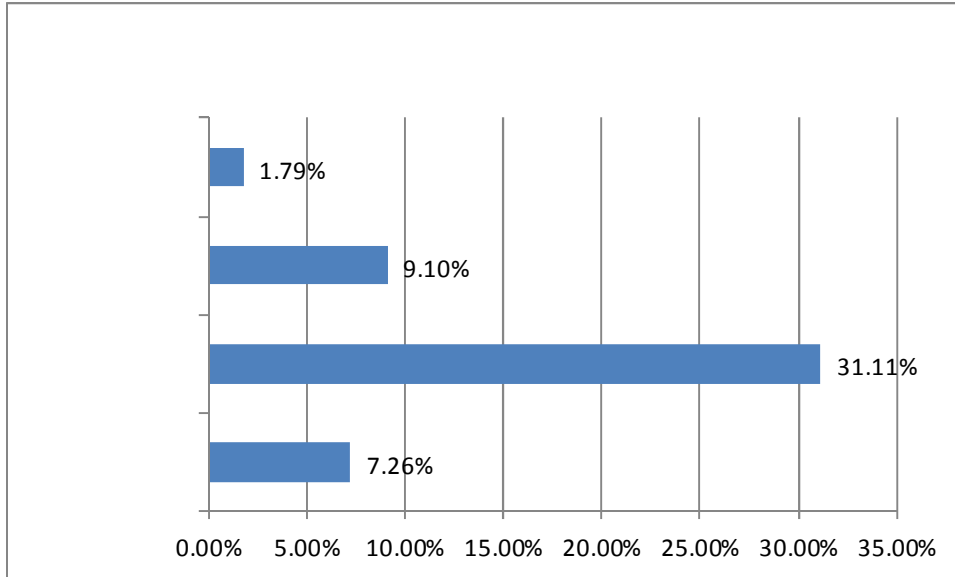
7.13%

1.





2

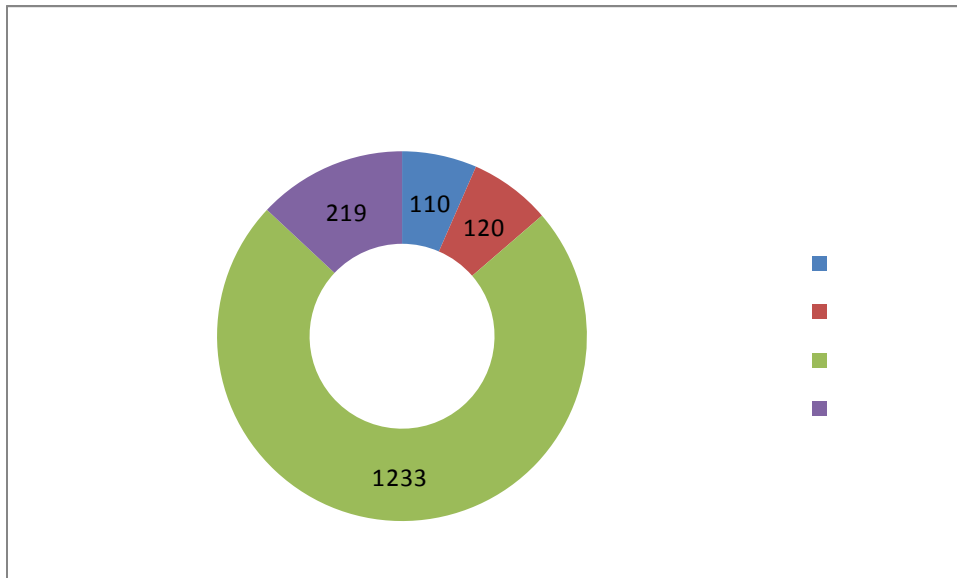


3



三、毕业生就业状况分析

2016 1682 110
1233 120 219





() :

1		1	0.07%
2		1093	81.38%
3		103	7.68%
4		40	2.98%
5		1	0.07%
6		1	0.07%
7		2	0.15%
8		102	7.60%
		1343	100%



() :

1		1196	89.05%
2		13	0.97%
3		28	2.08%
4		6	0.45%
5		7	0.52%

6

0.27%



2016

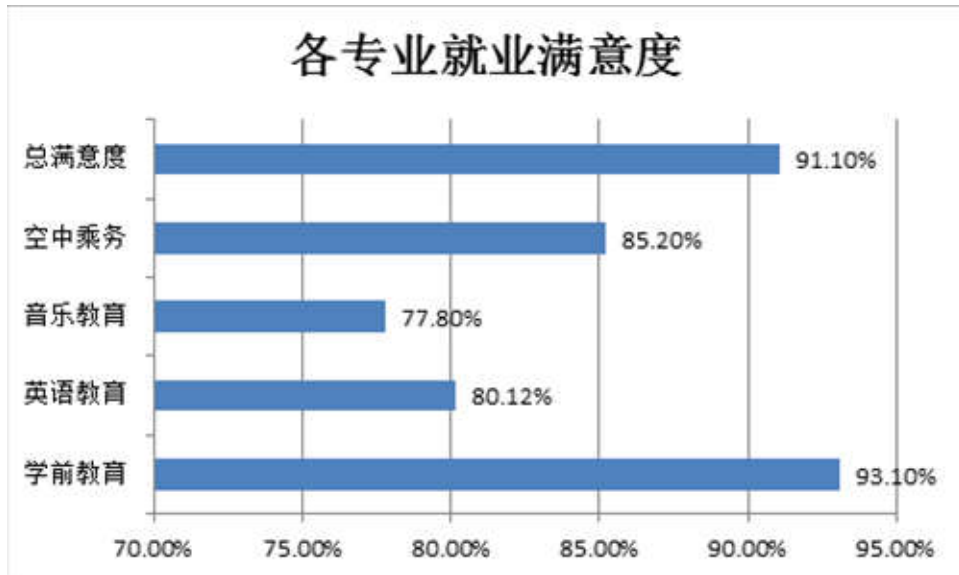
18

	1203	89.58%
	11	0.82%
	22	1.64%
	34	2.53%
	10	0.74%
	4	0.30%
	2	0.15%
	1	0.07%
	13	0.97%
	1	0.07%
	1	0.07%
	6	0.45%
	4	0.30%
	5	0.37%
	23	1.71%
	1	0.07%
	1	0.07%
	1	0.07%
	1343	100%



2016

91.1%

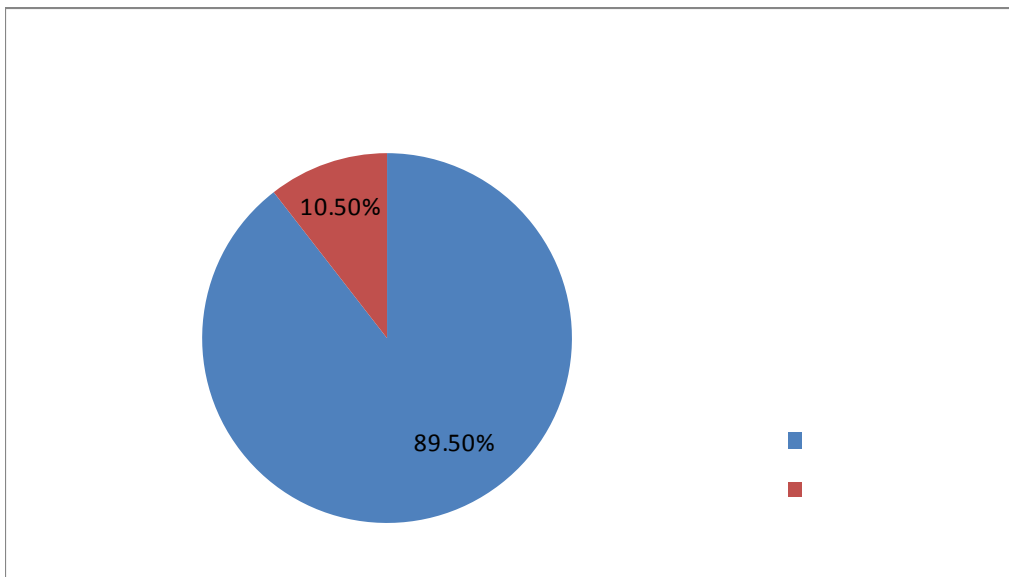


2016

” ” ” ”

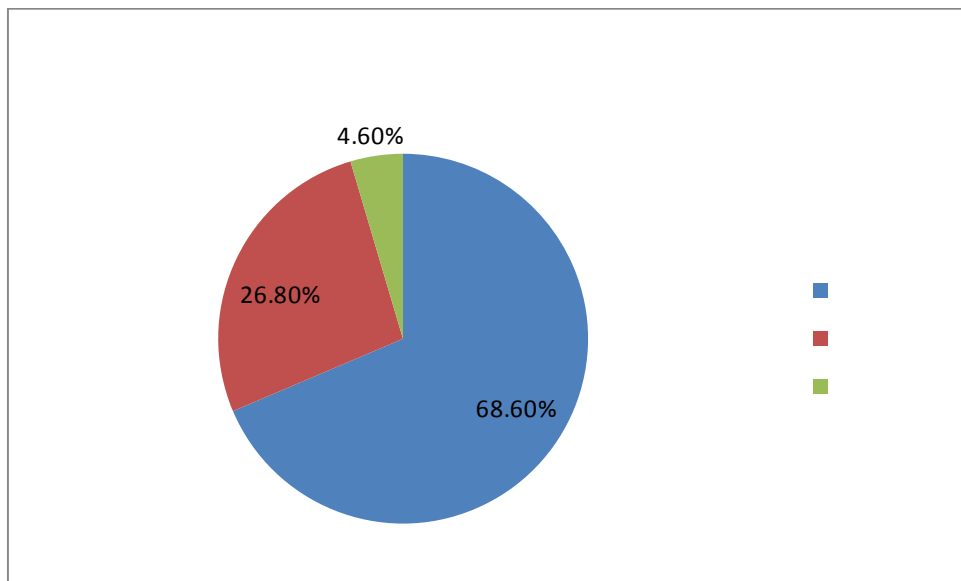
89.5%

10.5%





26.8% 95.4% 68.6%
4.6%



四、毕业生就业工作措施

“

”



“ ”

“ ”

“ ”

25



2015 9

2015

		数学	及格	及格	及格	及格	数学
			习		人	格	习



“

”

“

”



26



五：毕业生就业对教育教学的反馈



2016